



Quality, Accuracy, Durability at its Best


DARVESHTM
WATER METERS

ISO 9001:2015
ISO 14001:2015



Class-B
CM/L : 9700003612

SiTarc



Quality, Accuracy and Durability at it's best

OUR EXPERTS DELIVER INNOVATIVE, EFFICIENT & VALUE-DRIVEN SOLUTIONS FOR OUR CUSTOMERS.

Dasmesh Engineers(India) was started in 2014 with the blessings of Late S. Jaswant Singh Ji an enterprising industrialist from Amritsar, Punjab. We intend to become one of the largest manufacturers of water meters and it's spare parts. Our aim is to provide our customers with quality and efficiency in our products which our grandfather Late S. Jaswant Singh Ji envisioned. Darvesh Water Meter is the result of all the hard work and research conduted by us over the years.

HISTORY & MISSION

Dasmesh Engineers(India) was started in 2014. Our product Darvesh Water Meter is ISO 9001-2015, ISO 14001-2015, ISI and CE certified. Our Mission is to provide our customers with convenient and reliable design. We intend to keep on researching in order to keep making advancement and provide our customers with latest technology. We ensure the quality of our product firsthand because ultimately the happiness of our customer is our main goal.



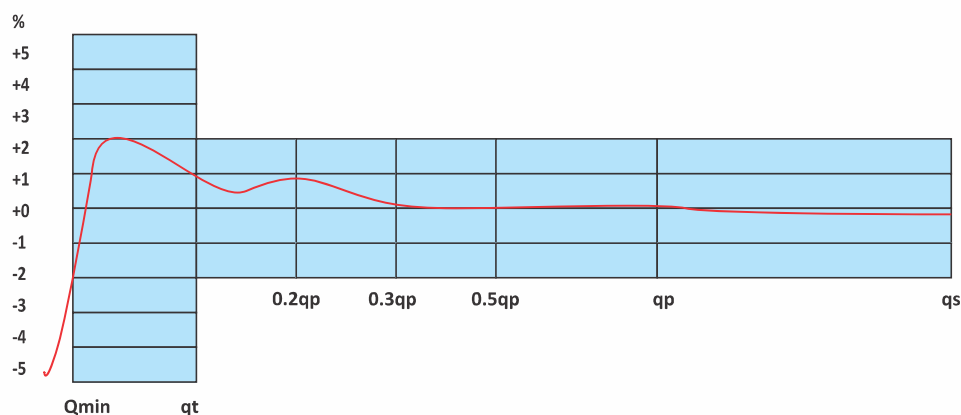
Model : SJB

Singlejet Water Meter Domestic Type (Magnetic Driven) Class B Equal to ISO 4064



Main Technical Data

Master Size Dia (mm)	Class	Qs Overall Flow	Qp Nominal Flow	Qt Transitional Flow	Qmin Min Flow	Starting Flow	Min Reading	Max Reading
		KL/H		L/H			Kilolitres	
15	B	3	1.5	120	30	14	0.0001	99999
20	B	5	2.5	200	50	16	0.0001	99999



Indicating Error:

In the lower zone Qmin inclusive up to but excluding Qt is +5%
In the Upper zone from Qt Inclusive up to & including Qs is +2%

Pressure Loss not to exceed :

0.1 MPa at Qmax
0.025 MPa at Qn

Working Conditions :

Water Temperature :
<45°C for cold water meter
<90° for hot water meter
Working Pressure : 1.6 MPa
Maximum Test Pressure: 2.0 MPa

Product Features :

1. Dry-dial, Magnetic drive, Resistance to exterior magnet interference.
2. Selected high quality materials for steady, reliable characteristic & good looking
3. Vacuum sealed register ensure the dial kept free from fog and keep the reading clear in a long term service.
4. Measuring accuracy conform to ISO 4064 Class B Standard for horizontal installation.
5. Universal use, easy for interchange & maintenance.
6. High Sensitivity, Low Pressure Loss



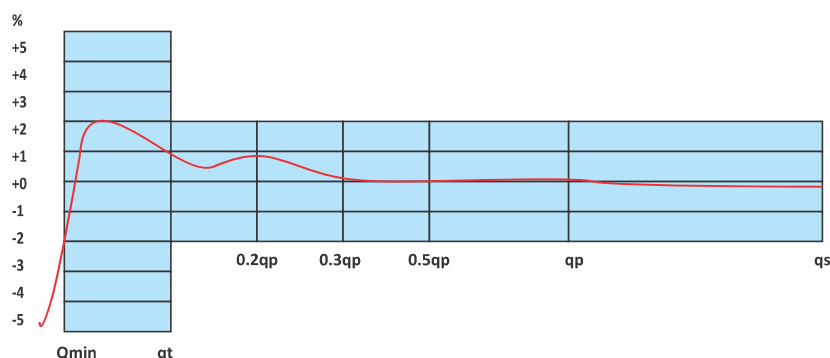
Model : MJB

Multijet Water Meter Domestic Type (Magnetic Driven) Class B Equal to ISO 4064



Main Technical Data

Master Size Dia (mm)	Class	Qs Overall Flow	Qp Nominal Flow	Qt Transitional Flow	Qmin Min Flow	Starting Flow	Min Reading	Max Reading
		KL/H		L/H			Kilolitres	
15	B	3	1.5	120	30	14	0.0001	99999
20	B	5	2.5	200	50	16	0.0001	99999
25	B	7	3.5	280	70	19	0.0001	99999
40	B	20	10	800	200	56	0.0001	99999
50	B	30	15	3000	450	70	0.0001	99999



Indicating Error:

In the lower zone Qmin inclusive up to but excluding Qt is +5%
In the Upper zone from Qt Inclusive up to & including Qs is +2%

Pressure Loss not to exceed :

0.1 MPa at Qmax
0.025 MPa at Qn

Working Conditions :

Water Temperature :
<45°C for cold water meter
<90° for hot water meter
Working Pressure : 1.6 MPa
Maximum Test Pressure: 2.0 MPa

Product Features :

1. Dry-dial, Magnetic drive, Resistance to exterior magnet interference.
2. Selected high quality materials for steady, reliable characteristic & good looking
3. Vacuum sealed register ensure the dial kept free from fog and keep the reading clear in a long term service.
4. Measuring accuracy conform to ISO 4064 Class B Standard for horizontal installation.
5. Universal use, easy for interchange & maintenance.
6. High Sensitivity, Low Pressure Loss



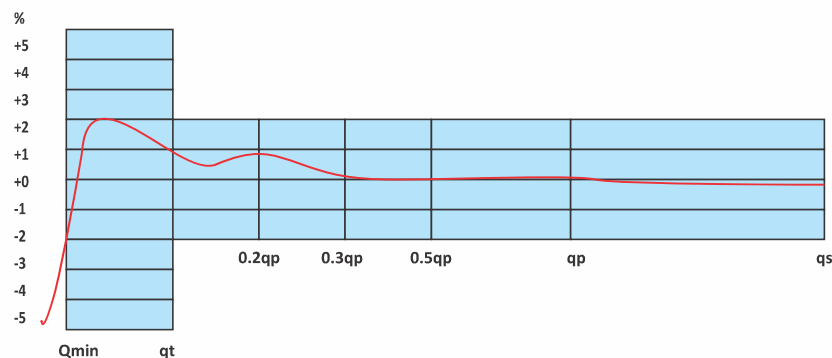
A.M.R. Multijet Water Meter Domestic Type (Magnetic Driven) Class B Equal to ISO 4064



Model : AMRB

Main Technical Data

Master Size Dia (mm)	Class	Qs Overall Flow	Qp Nominal Flow	Qt Transitional Flow	Qmin Min Flow	Starting Flow	Min Reading	Max Reading
		KL/H		L/H			Kilolitres	
15	B	3	1.5	120	30	14	0.0001	99999
20	B	5	2.5	200	50	16	0.0001	99999
25	B	7	3.5	280	70	19	0.0001	99999
40	B	20	10	800	200	56	0.0001	99999
50	B	30	15	3000	450	70	0.0001	99999



Indicating Error:

In the lower zone Qmin inclusive up to but excluding Qt is +5%
In the Upper zone from Qt Inclusive up to & including Qs is +2%

Pressure Loss not to exceed :

0.1 MPa at Qmax
0.025 MPa at Qn

Working Conditions :

Water Temperature :
<45°C for cold water meter
<90° for hot water meter
Working Pressure : 1.6 MPa
Maximum Test Pressure: 2.0 MPa

Product Features :

1. Dry-dial, Magnetic drive, Resistance to exterior magnet interference.
2. Selected high quality materials for steady, reliable characteristic & good looking
3. Vacuum sealed register ensure the dial kept free from fog and keep the reading clear in a long term service.
4. Measuring accuracy conform to ISO 4064 Class B Standard for horizontal installation.
5. Universal use, easy for interchange & maintenance.
6. High Sensitivity, Low Pressure Loss

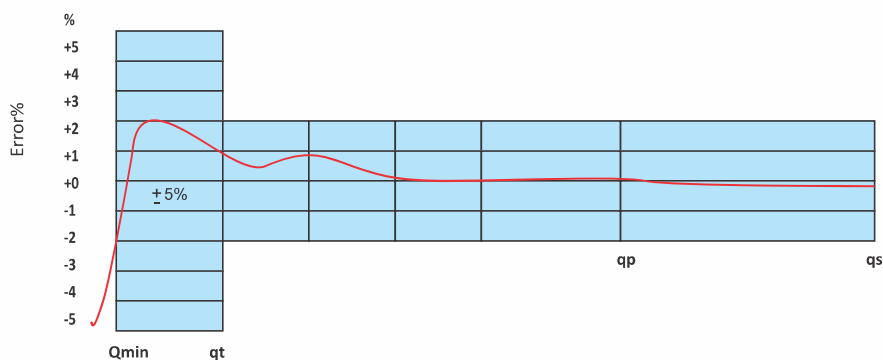


Model : WMB

Woltman Type Water Meter (Removable Mechanism) Class-B Equal to ISO - 4064 Magnetic Driven with Flange Ends

MAIN TECHNICAL DATA:

Nominal size DN(mn)	Class of measurement	Overload flow-rate $q_s(m^3/h)$	Permanet flow-rate $Q_t(l/h)$	Transitional flow-rate $Q_1(l/h)$	Minimum flow-rate $Q_{min}(l/h)$	Minimum flow-rate $Q_{min}(l/h)$	Maximum flow-rate $Max(m^3)$
50	B	30	15	3.0	0.45	0.01	999999
65	B	50	25	5	0.75	0.01	999999
80	B	80	40	8	1.2	0.01	999999
100	B	120	60	12	1.8	0.1	9999999
125	B	200	100	20	3	0.1	9999999
150	B	300	150	30	4.5	0.1	9999999
200	B	500	250	50	7.5	0.1	9999999
250	B	800	400	80	12	0.1	9999999
300	B	1200	600	120	18	0.1	9999999
400	B	2000	1000	200	30	0.1	9999999
500	B	3000	1500	300	45	0.1	9999999



Indicating Error:

In the lower zone Q_{min} inclusive up to but excluding Q_t is +5%
In the Upper zone from Q_t Inclusive up to & including Q_s is +2%

Pressure Loss not to exceed :

0.1 MPa at Q_{max}
0.025 MPa at Q_n

Working Conditions :

Water Temperature :
<45°C for cold water meter
<90°C for hot water meter
Working Pressure : 1.6 MPa
Maximum Test Pressure: 2.0 MPa

Product Features :

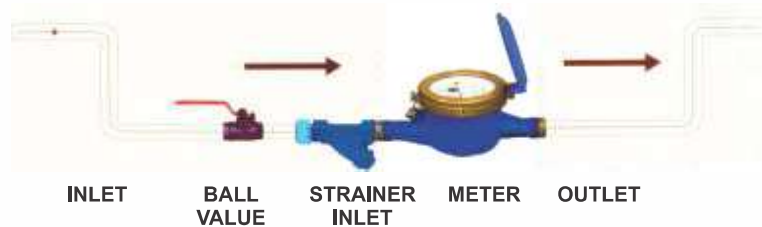
1. Dry-dial, Magnetic drive, Resistance to exterior magnet interference.
2. Selected high quality materials for steady, reliable characteristic & good looking
3. Vacuum sealed register ensure the dial kept free from fog and keep the reading clear in a long term service.
4. Measuring accuracy conform to ISO 4064 Class B Standard for horizontal installation.
5. Universal use, easy for interchange & maintenance.
6. High Sensitivity, Low Pressure Loss

Installations Guidelines :

INSTALLATIONS INSTRUCTIONS /CHECK LIST

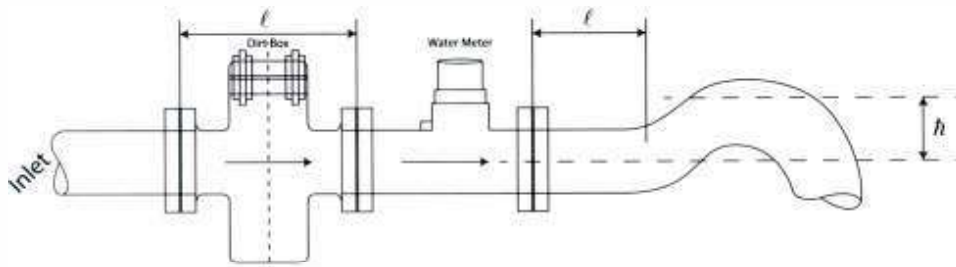
- Check that Seal and Serial No. of Water Meter are intact
- Check that test Certificate giving test results for pressure tightness, loss of pressure, metering accuracy minimum starting flow.
- Check that before installing meter the line is thoroughly flushed.
- Check that the meter is installed according to the direction of flow marked on the meter.
- Check that inferential meter is placed horizontally with dial upwards.
- Check that inferential meter is placed horizontally with dial upwards.
- Check that the Strainer of the meter is not removed.
- Check that the meter has been installed as recommended in the installation drawing.

Domestic Type Water Meter

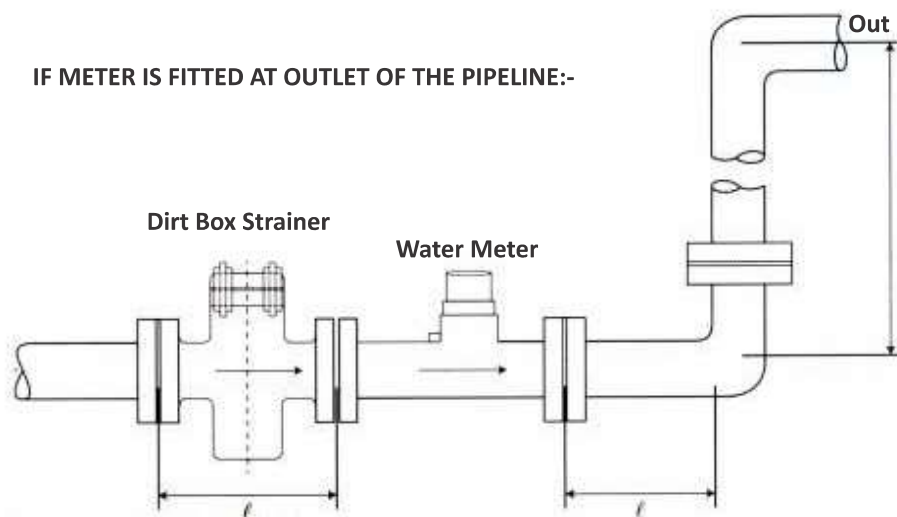


Woltman Type Magnetic Driven Water Meter (Flange Ends)

IF METER IS FITTED AT OUTLET OF THE PIPELINE:-



IF METER IS FITTED AT OUTLET OF THE PIPELINE:-



Important:-

- h should not be less than the nominal bore of the pipe line.
- H should be equal or more than three times of the nominal bore of the pipeline.
- L should be equal or more than ten times of the nominal bore of the pipe line.